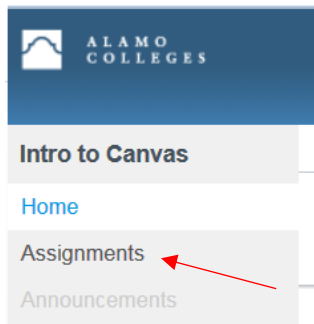


## Bio Sig Directions for Faculty

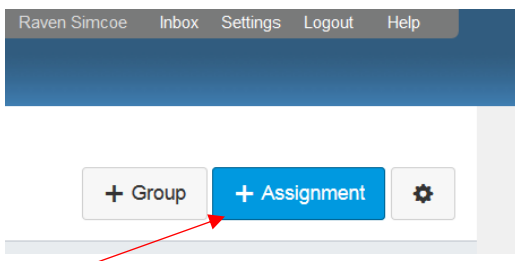
Bio Sig Mus be created in Assignments!!!

Creating a **BIO SIG** assignment in Canvas. (This is a **SEPARATE** assignment from the quiz or assignment that you want verified.)

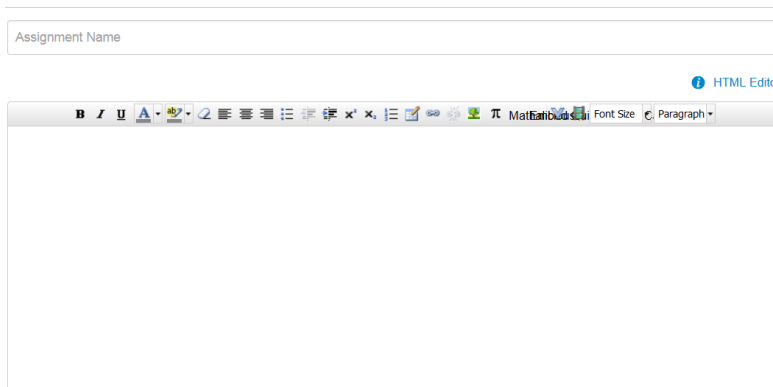
- 1) Click on "Assignment" tab



- 2) Click on "+ Assignment"



- 3) Fill in the Bio Sig assignment name and Bio Sig directions

A screenshot of the Canvas assignment creation form. At the top, there is a text input field labeled 'Assignment Name'. Below this is a rich text editor with a toolbar containing various icons for text formatting (bold, italic, underline, link, unlink, text color, background color, bulleted list, numbered list, indent, outdent, link, unlink, image, video, audio, embed, source, undo, redo, clear) and a 'Paragraph' dropdown menu. The text editor area is currently empty.

- 4) Fill in the point value of the Bio Sig assignment (for best results give the assignment at least 1 point), Select the assignment group, and choose how you want the grade displayed.

Points

Assignment Group

Display Grade as

- 5) For Submission Type, select “External Tool”

Submission Type

- 6) Click in the empty field

Submission Type

**External Tool Options**

External Tool URL

Load This Tool In A New Tab

- 7) When the pop-up box appears, Click on “BioSig-ID,” then “Select”

Configure External Tool

Select a tool from the list below, or enter a URL for an external tool you already know is configured with Basic LTI to add a link to it to this module.

**Attendance Tool**  
A very handy tool for creating seating charts and keeping track of attendance.

**BB Collaborate**  
Web Conferencing

**BioSig-ID**  
BioSig is an identity verification tool.

**Brainfuse Online Tutoring**

Cancel

8) Fill in the assignment's availability and due dates and click "Update Assignment"

For: Everyone  
Due Date: [Calendar icon]  
Available From: [Calendar icon]  
Until: [Calendar icon]

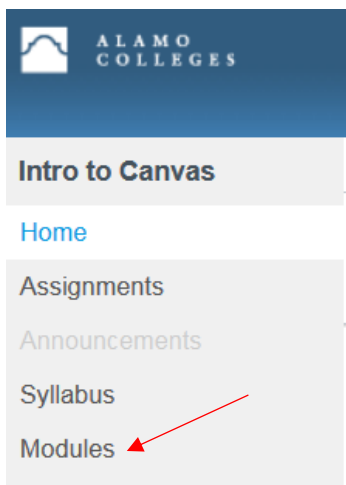
Notify users that this content has changed

Cancel Update Assignment

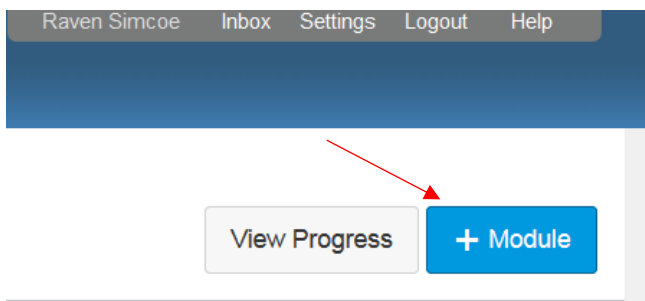
CONGRATULATIONS! You have now created a Bio Sig ID Verification Assignment!

PUTTING BIO SIG IN MODULE

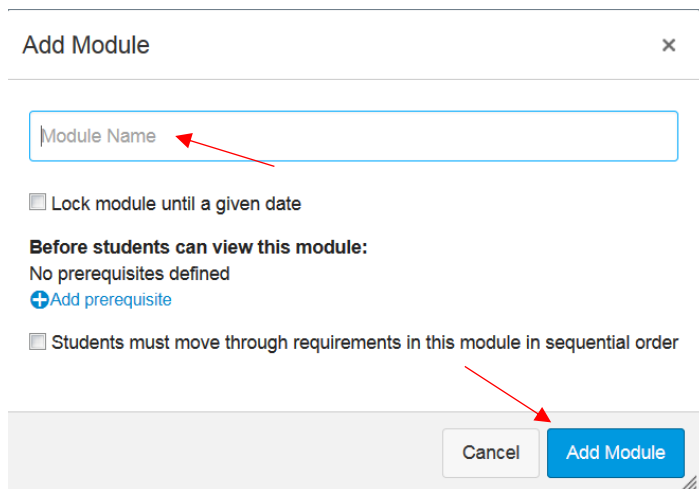
1) Click on the "Modules" tab



2a) Add a new module by clicking on "+ Module" on the upper right hand side.

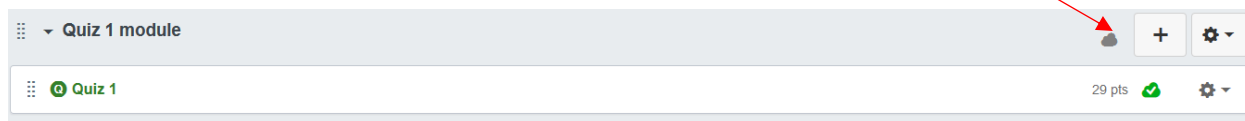


2b) Name the Module and click “Add Module”

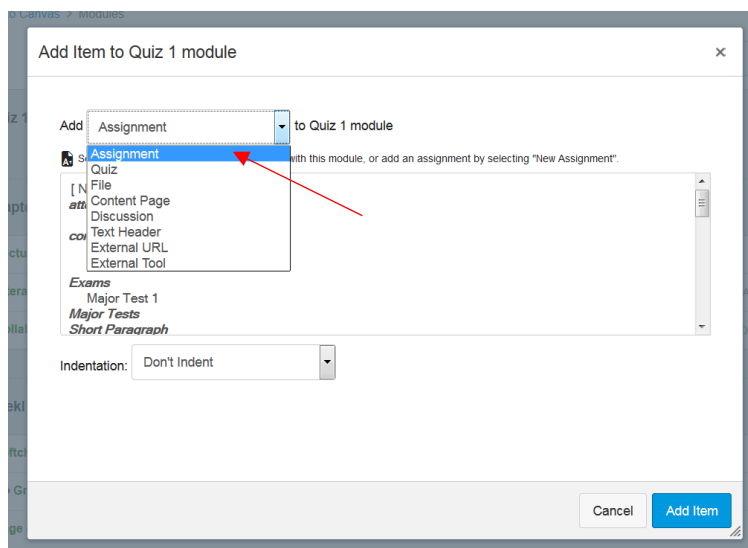


**OR**

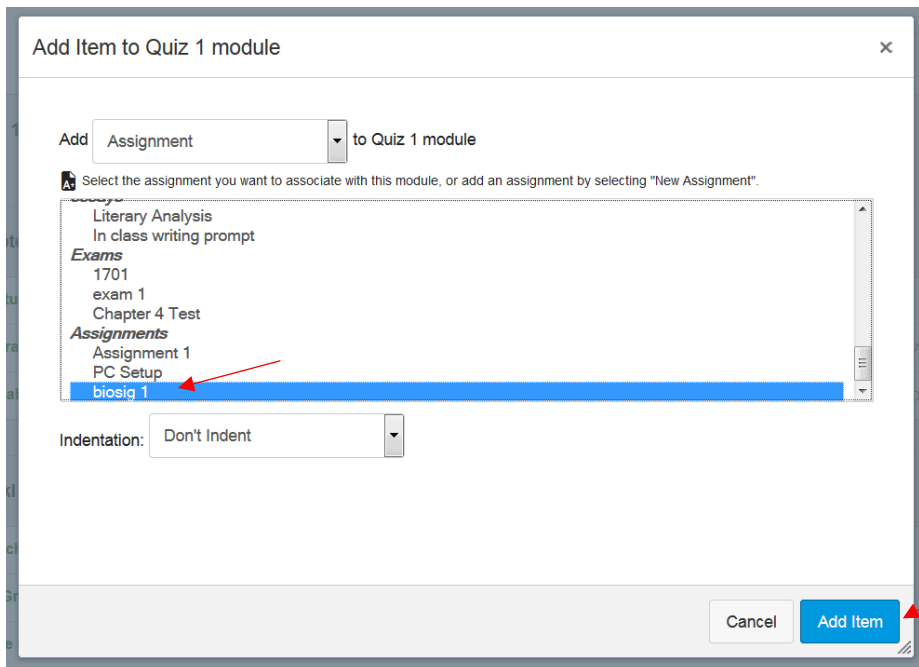
3) Add to an existing module by clicking on the “+” symbol on the right hand side of an existing module



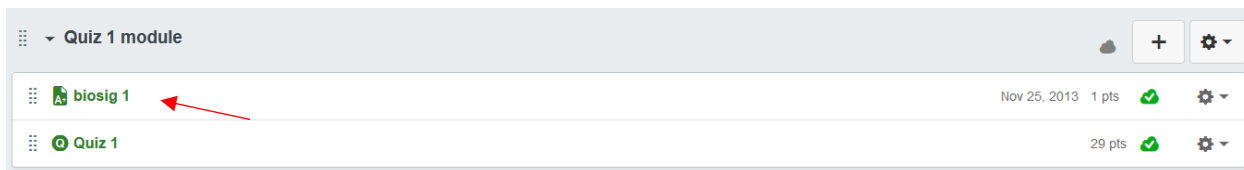
3b) Choose “Assignment” from the drop down menu



3c) Scroll to find the BioSig Verification Assignment, select the assignment and click “Add Item”



4) You should now see the BioSig Verification Assignment in your module. You may have to move your BioSig assignment so that it is before/above the assignment you want verified (Quiz 1).



CONGRATULATIONS! You have just added your Bio Sig Verification Assignment to a Module